



Protecting Our Skies

Ensuring Our Future

Above Idaho's breathtaking landscapes, our night skies are a treasure to be protected and shared. They showcase a million stars, but light pollution threatens this natural wonder. The Idaho Dark Sky Alliance is launching a campaign to protect our dark skies for future generations and for wildlife. This isn't just about beauty; it's about preserving a fundamental human experience and a healthy ecosystem. Join us. Let's ensure Idaho's night skies continue to inspire wonder.



Dark Sky Observatory

Located in the Stanley Pioneer Park, this building will safely house our powerful telescope, act as a base for astronomy groups and programs, and include outdoor interpretive signage.



Education & Outreach

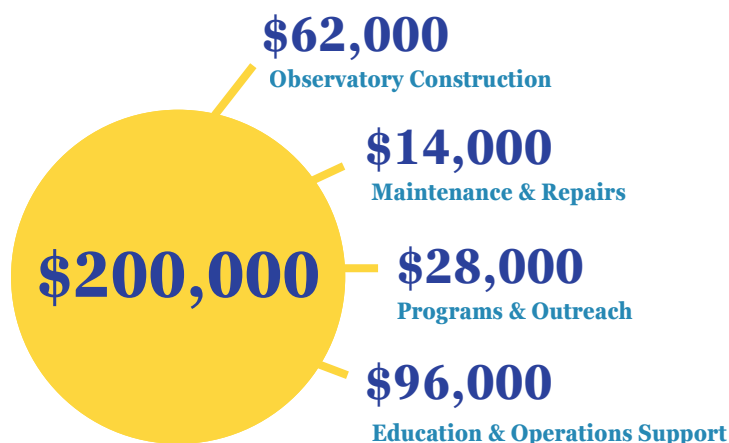
Astronomer-in-Residence, speaker series, community events, school programs, programs on lighting principles and ordinances, citizen science opportunities and more.



Operations & Support

Expand our impact with a position to engage with local & statewide organizations, build a sustainable funding model for operations, and help maintain our Dark Sky Reserve status.

What will it take?



Campaign Launch

An anonymous donor has pledged **\$35,500** to launch this effort!

Timeline:

Break Ground for Observatory – June 2025
Finish Observatory – Winter 2025/2026
First Light Ceremony – Spring 2026
Begin Observatory Programming – June 2026

Contact us:

✉ info@idahodarksky.org

🌐 idahodarksky.org

Dark Sky Observatory:

Located in Stanley Pioneer Park

Roll-off Roof

14" Celestron Edge HD Telescope

Regular Public Programming

Here in the heart of central Idaho, we celebrate our pristine night sky as an essential part of our heritage and a treasure to be preserved into the future both of our own children and for subsequent generations. Across the country, more than 80% of the population resides in cities and urban areas where light pollution obscures their view of the stars. Research shows that the Milky Way is not visible to more than one-third of the world's population.

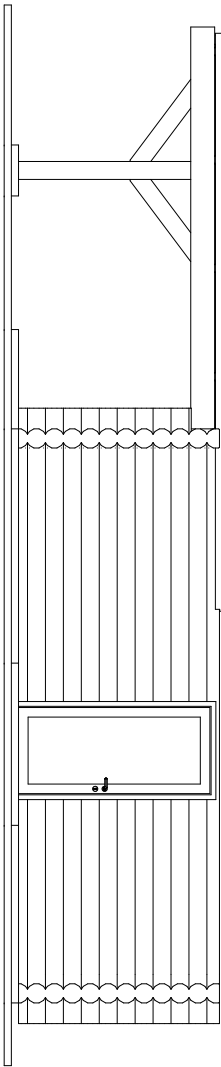
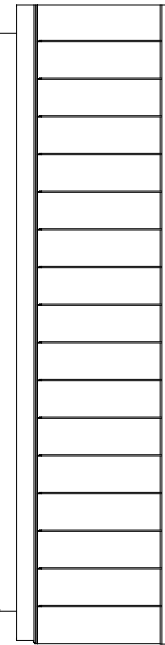
The Central Idaho Dark Sky Reserve is a treasured resource for local residents and for all Idahoans and visitors from across the world that come to experience the wonder of the starry night sky.

The Dark Sky Observatory will house a 14-inch telescope that was donated to the Reserve. The Celestron Edge HD Telescope has exceptional optics that provide detailed views of stars, planets and other deep-sky objects for visual observing and astrophotography.

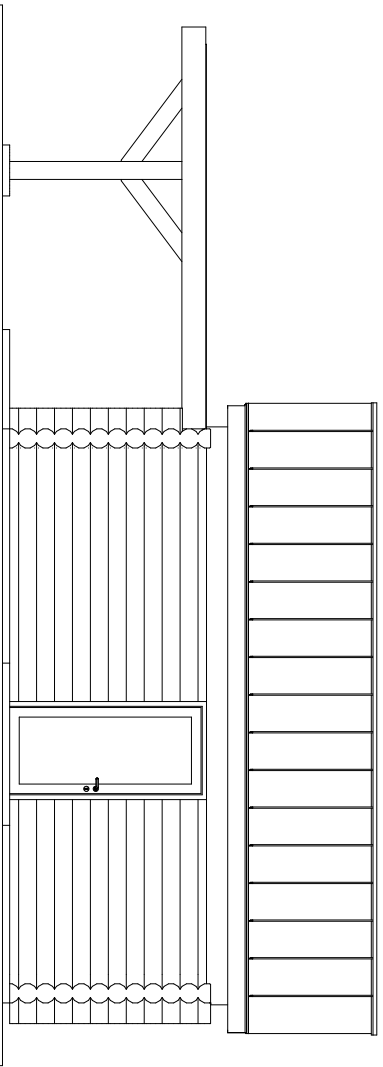


Donate

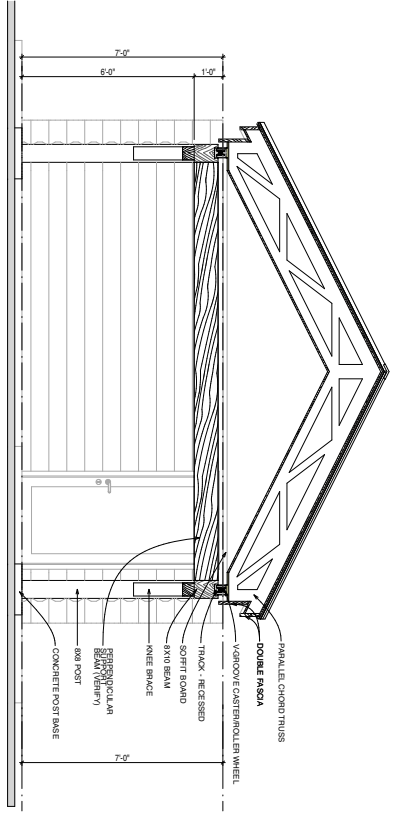




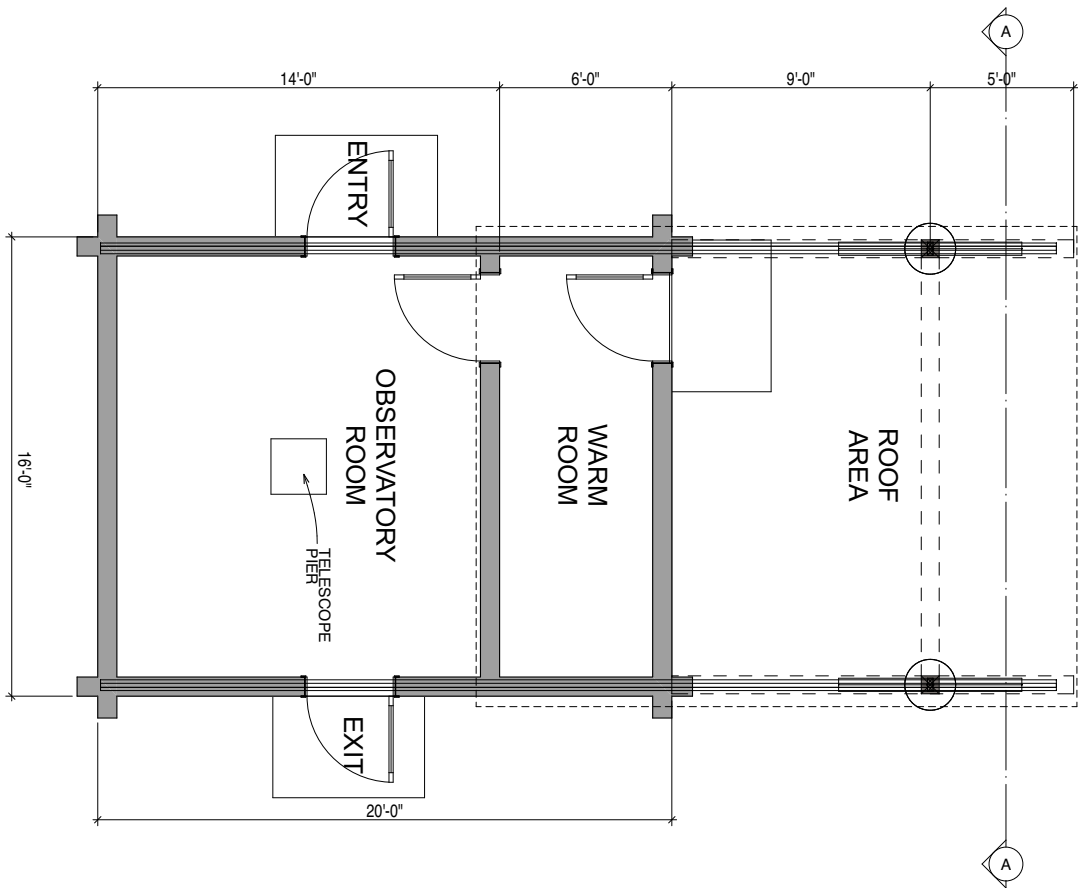
ELEVATION - OPEN

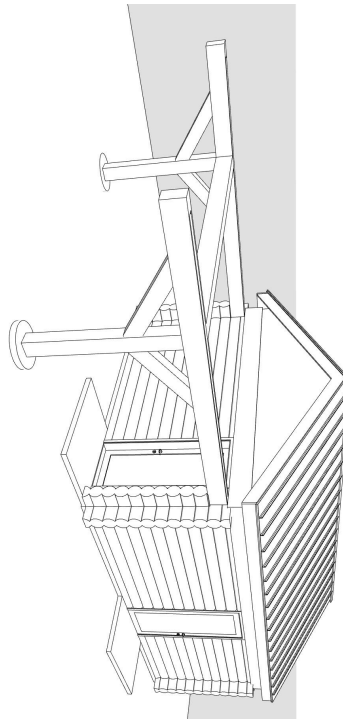
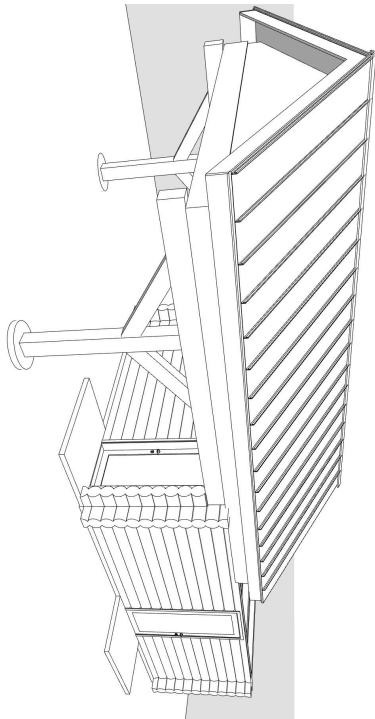
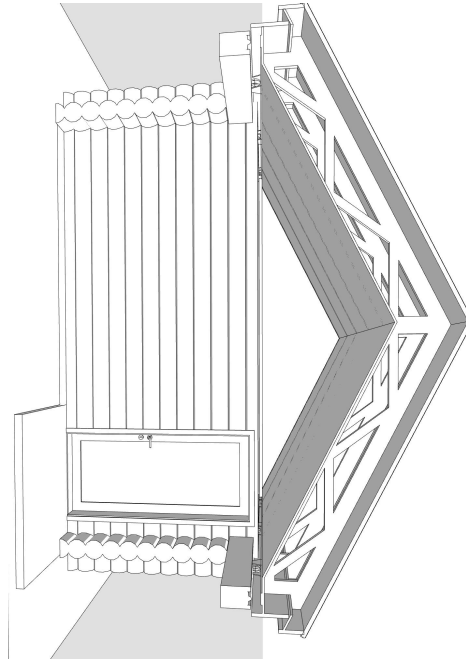
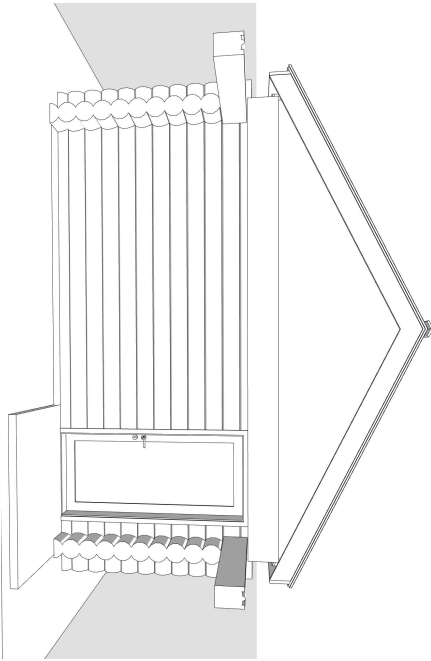
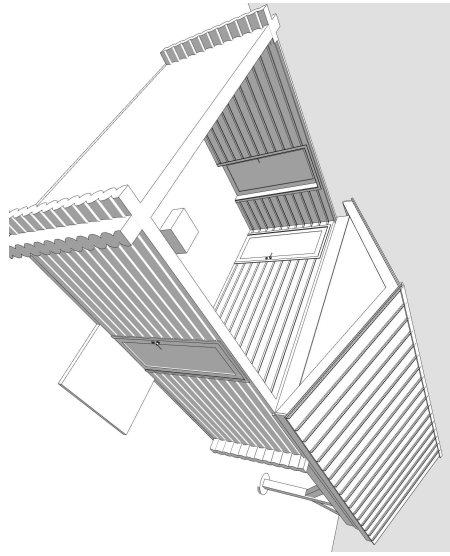
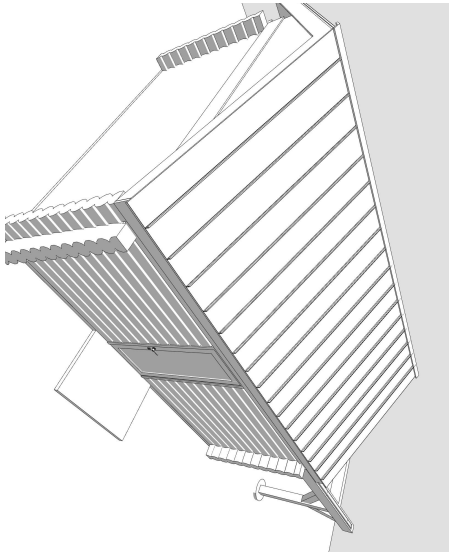


ELEVATION - CLOSED



SECTION







Look up. Be Amazed.

Idaho Dark Sky Alliance
PO Box 4903 Ketchum, ID 83340
www.idahodarksky.org
208-352-3153
info@idahodarksky.org

Here in the heart of Idaho, we celebrate the pristine night sky as part of our heritage and a treasure worth preserving for our children and future generations. Looking up at the night sky filled with brilliant stars, planets and the Milky Way is always a truly amazing experience.

The Idaho Dark Sky Alliance is a 501(c)(3) nonprofit organization established in 2020. Our mission is *to protect the night sky and reduce light pollution in the Central Idaho Dark Sky Reserve through education and advocacy*. The IDSA Board works with local cities, counties, agencies and other organizations to coordinate day-to-day operations and fundraising for dark sky efforts within the Reserve.

The **Central Idaho Dark Sky Reserve** was designated in 2017 by DarkSky International as the first Dark Sky Reserve in the U.S. It encompasses 906,000 acres (1,416 sq mi) in Blaine and Custer Counties. Much of the Reserve is located within the Sawtooth National Recreation Area and includes the communities of Stanley, Ketchum and Sun Valley. The designation was based on two decades of planning efforts and wise policy decisions by city and county leaders, local businesses and organizations, and public land managers. Working together, these partners continue to focus on preserving the quality of the night-time environment and reducing the impact of light pollution in the area.

Dark Sky Facts:

- More than 80 percent of people in the United States live in areas where light pollution obscures their view of the night sky and the Milky Way. It is critical for us to protect places that still have truly dark skies. We're lucky that Idaho has many areas with spectacular views of the night sky.
- Light pollution is defined as the inappropriate or excessive use of artificial light and has serious health and environmental consequences for humans, wildlife, and ecosystems.
- Approximately 35 percent of outdoor lighting is wasted by using unshielded or unnecessary lighting. This wastes approximately \$3 billion worth of energy per year.
- Many birds and other wildlife are nocturnal and use the moon and stars for navigation. Excessive artificial light at night disrupts migration, hunting and feeding patterns, and other critical behaviors.